



SNUGGLE SESH

SOPHIA MONFERRATO



“Baby it’s cold outside...”

*Grab your favorite blanket
and find that perfect spot on
your couch to snuggle up!*

CONCEPT BRIEF

Sit with us around our beautiful indoor fireplaces on a luxurious sofa made just for you. Grab your new favorite blanket and pillow and enjoy the new way to purchase home furnishings. We offer hundreds of customizable sofa options perfect for you and your family - there's no rush either! Spend a day with your favorite sofa cuddled up in one of our private viewing rooms, complete with a in-room theater for your ultimate comfort.





CLIENT PROFILE

The Anderson family travels to Vail, CO every winter to enjoy their vacation home in the mountains. They are looking to revamp their home with new furniture and fixtures. By visiting Snuggle Sesh, the family has every opportunity to try our products for extended periods of time before purchase. The Andersons and families like them, are the clientele Snuggle Sesh seeks to attract.

VAIL, COLORADO



**225 WALL ST
UNIT 103A
VAIL, CO 81657
UNITED STATES**

HOUSING

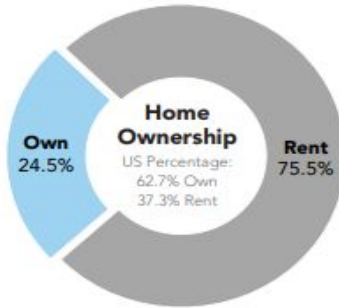
Median home value is displayed for markets that are primarily owner occupied; average rent is shown for renter-occupied markets. Tenure and home value are estimated by Esri. Housing type and average rent are from the Census Bureau's American Community Survey.



Typical Housing:
High-Density Apartments

Average Rent:
\$1,442

US Average: \$1,038



OUR NEIGHBORHOOD

- *Trendsetters* residents are singles—living alone or with roommates or partners.
- More than 75% rent in upscale, multiunit structures.
- High-rent cities like New York; San Francisco; Chicago; and Washington, DC are popular among renters willing to pay well above US average rent (Index 138).
- Commuting can take up to an hour; public transportation, walking, and biking are popular; many own no vehicle.

SOCIOECONOMIC TRAITS

- Residents are young and well educated; more than half have a bachelor's degree or more.
- Well paid, with little financial responsibility, these consumers are spenders rather than savers. They seek financial advice and are already building their stock portfolios.
- Image is important to these consumers. They use the Internet to keep up with the latest styles and trends and shop around for good deals.
- *Trendsetters* residents travel often, exploring new destinations and experiences.
- Socially and environmentally conscious, they are willing to pay more for products that support their causes.
- Up-to-date on technology, they explore and exploit all the features of their smartphones.
- They are attentive to good health and nutrition.

LifeMode Group: Uptown Individuals

Trendsetters

Households: 1,319,400

Average Household Size: 2.12

Median Age: 36.3

Median Household Income: \$63,100

S.W.O.T ANALYSIS

STRENGTHS

An immersive experience allows for the client to have a complete understanding of the product before purchase.

WEAKNESS

Limited product variation and viewing rooms in showroom mean that they possibly cannot accommodate everyone's needs.

OPPORTUNITIES

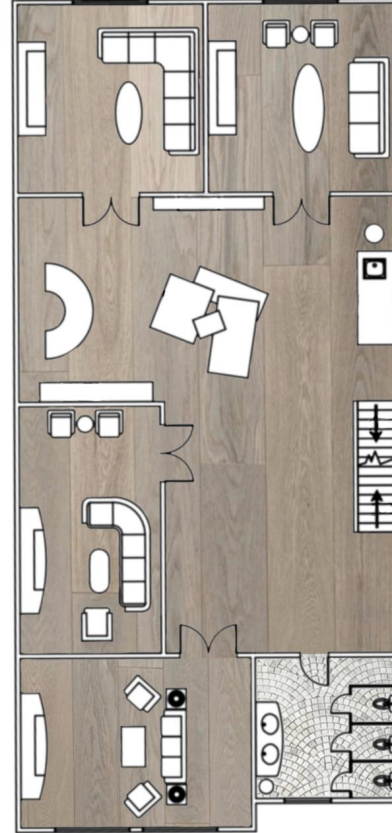
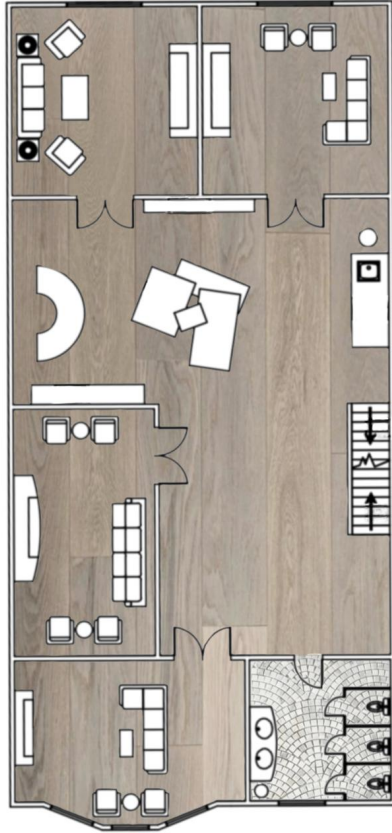
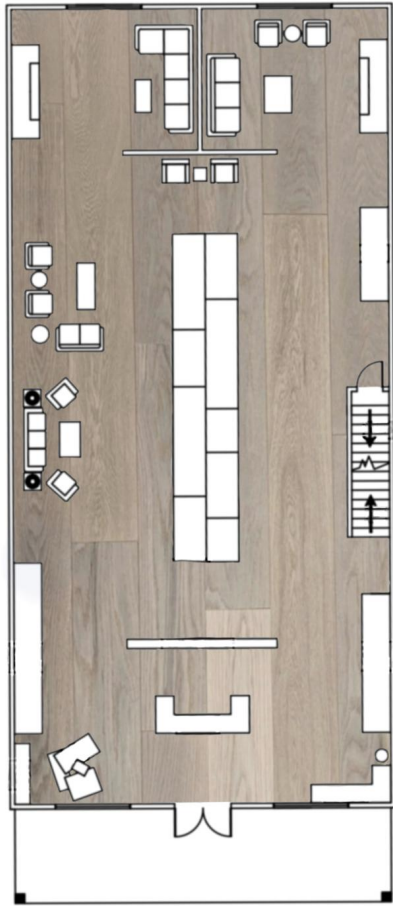
Expand products sold by purchasing more retail space in various affluent locations.

THREATS

Very focused group of clientele, if first location was more accessible maybe more people from different walks of life would visit.

CONCEPT BOARD





FLOORPLAN

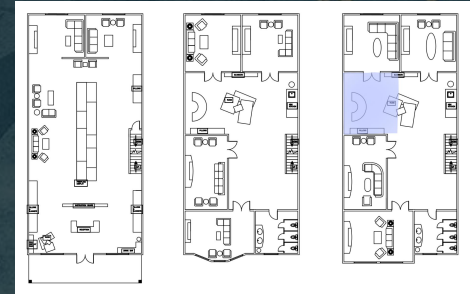
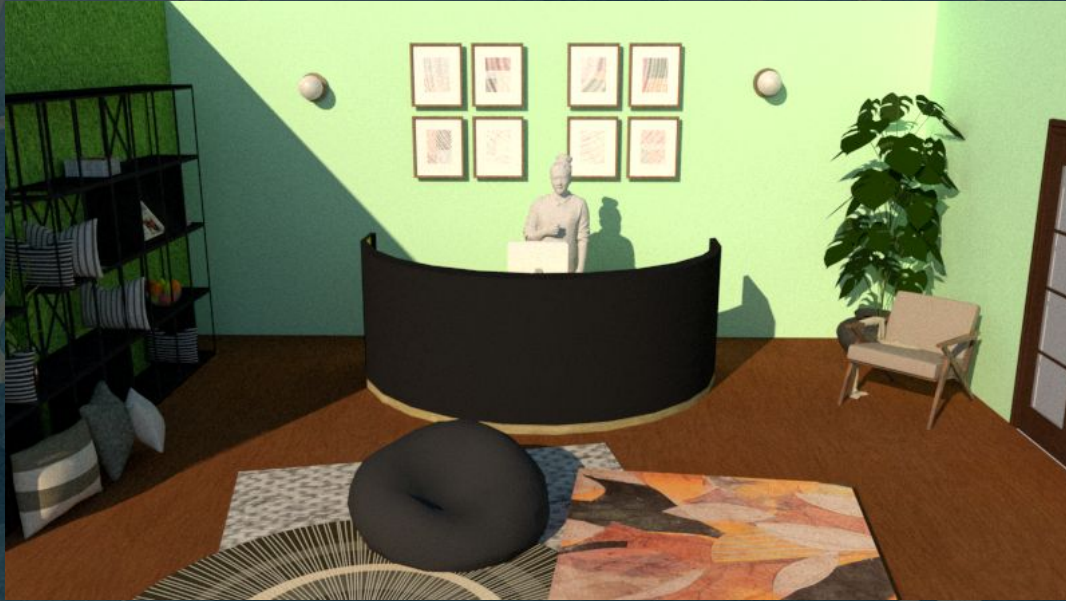
EXTERIOR POINT OF VIEW



EXTERIOR POINT OF VIEW



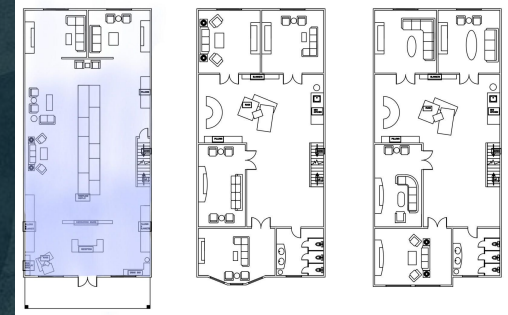
INTERIOR POINT OF VIEW



INTERIOR POINT OF VIEW



INTERIOR POINT OF VIEW



The background features a watercolor-style pattern. It consists of overlapping, semi-transparent circles in various shades of blue, ranging from a deep navy to a lighter, muted teal. Superimposed on these circles are delicate, branching structures in a golden-brown or light tan color, resembling coral, seaweed, or perhaps stylized tree branches. The overall aesthetic is organic and textured.

PRODUCTS
BUILDING MATERIALS



Bamboo hardwood floors

Interior double doors



Recycled glass countertops





durable



easy installation

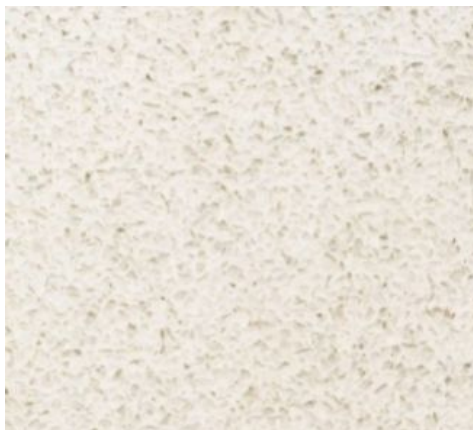


eco-friendly



pet-friendly

Construction	Engineered
Milling	Click Lock
Grain	Fossilized* Carbonized Strand Bamboo
Plank Length	72-7/8"
Plank Width	5-5/16"
Plank Thickness	9/16"
Install Type	Glue and Float
Residential Warranty	50 Year
Commercial Warranty	15 Year
LEED Points	EQC4.3 MRC6 MRC7
Indoor Air Quality	CARB 93120 & EPA TSCA Title VI Compliant for Formaldehyde, Prop 65 Compliant. Test Results Available upon Request.
Certification	FloorScore® Certified
Sound Ratings	STC 62 & IIC 63 (installed with Cali Complete Underlayment and a Drop Ceiling)
Application	Residential, Commercial
Radiant Heat Compatible	Yes (up to 85°F)
Fire Rating	Class I Interior
For the most up-to-date specification information, please visit www.CaliFloors.com	



SECTION 04 49 82

EPOXY RESIN COUNTERTOPS AND VANITIES WITH GLASS MATRIX

.....
 This guide specification has been prepared by **GLASS RECYCLED LLC** in printed and electronic media, as an aid to specifiers in preparing written construction documents for counter tops and vanities using **GlassSLAB®** countertops made from **GlassSCAPE®** recycled glass and/or recycled porcelain epoxy matrix. **GlassSLAB** represents 80 percent recycled glass and/or recycled porcelain and 20 percent of a non-voc color-pigmented epoxy resin binder.

Edit entire master to suit project requirements. Modify or add items as necessary. Delete items which are not applicable. Words and sentences within brackets [] reflect a choice to be made regarding inclusion or exclusion of a particular item or statement. This section may include performance, proprietary and descriptive type specifications. Edit to avoid conflicting requirements. Editor notes to guide the specifier are included between lines of asterisks to assist in choices to be made. Remove these notes before final printing of specification.

This guide specification is written around the Construction Specifications Institute (CSI), Section Format standards references to section names and numbers are based on Master Format 2004.

For specification assistance on specific product applications, please contact our offices above or any of our local product representatives throughout the country.

GLASS RECYCLED LLC., reserves the right to modify the guide specifications at any time. Updates to this guide specification will be posted to the manufacturer's web site and/or in printed matter as they occur. GLASS RECYCLED LLC makes no expressed or implied warranties regarding content, errors, or omissions in the information presented.

<u>PROPERTY</u>	<u>TEST METHOD</u>	<u>REQUIREMENT</u>
Flammability	ASTM D-635	Self-extinguishing, extent of burning 0.25 maximum
Thermal Coefficient of Linear Exp	ASTM D-696	25 x 10 ⁻⁶ per 140 degrees
Bond Strength	Surface Soundness	100% Concrete 300 PSI tensile strength

<u>PROPERTY</u>	<u>TEST METHOD</u>	<u>REQUIREMENT</u>
Hardness	ASTM D-2240 using Shore D Durometer	60-85
Tensile Strength	ASTM D-638 run @ 0.2" minimum	3,000 psi minimum
Compressive Strength	ASTM D-695 Specimen B Cylinder	10,000 psi minimum
Chemical Resistance	ASTM D-1308/ 7 days at room temperature by immersion method have no deleterious effects.	No effect



RC-01 Metal Inlay

Rustic Contemporary

Contemporary Doors with Decorative Metal

- Decorative metal on both sides
- Sold with Artistic Distress and Finish
- **Note: topcoat required before exterior use**
- Prehung options available
- Price is for prefinished door (slab)
- Price is FOB Los Angeles, California
- Price subject to change without notice
- All doors are 1 3/4" thick

The background is a watercolor-style pattern. It features several overlapping, semi-transparent circles in various shades of blue, ranging from a deep navy to a lighter, muted teal. Superimposed on these circles are delicate, branching structures in a light gold or beige color, resembling coral, seaweed, or bare tree branches. The overall aesthetic is soft and organic.

PRODUCTS
OCCASIONAL CHAIRS
FOURHANDS



Shop pure comfort and style
with our selection of
occasional chairs

All available in different
colors and fabrics

105768-009

Augustine Swivel Chair-Dover Crescent | \$455.00 Your Cost



OVERVIEW

A modern take on the classic library chair, crisp, clean linen-blend upholstery features dramatic channeling, for trend-forward texture and sumptuous sit.

Ready for Immediate Shipment: 5/4
More Arriving Soon: Yes, Early January 2022

PRODUCT DETAILS

SKU: 105768-009
Collection: Grayson
Weight: 71.65 lb
Colors: Dover Crescent
Materials: 71%W, 17%PL, 12%LI
Volume: 19.56 cu ft

Overall Dimensions: 32.00"w x 34.00"d x 26.50"h
Seat Depth: 23.0"
Seat Height: 17.0"
Arm Height from Floor: 26.5"
Arm Height from Seat: 9.5"
Seat Construction: S-Spring

COLLECTION OVERVIEW

From the Grayson Collection

Dramatic channeling and deep tufting deliver generous depth to curvy, expertly-upholstered seating styles. Lush materials adopt versatile neutral and rich jewel tones, together fashioning a feminine air and refined-retro vibe, bringing sophistication to forward-thinking forms.

108950-010

Lyla Chair-Kerbey Ivory | \$455.00 Your Cost



OVERVIEW

A fresh take on the traditional tub chair, with exaggerated depth for drama and comfort. Solid rubberwood legs intersect ivory upholstery for clean contrast of color and scale.

Ready for Immediate Shipment: 0
More Arriving Soon: Yes, 1 to 3 weeks

PRODUCT DETAILS

SKU: 108950-010
Collection: Caswell
Weight: 58.2 lb
Colors: Kerbey Ivory, Distressed Natural
Materials: 96% F, 4% P, Solid Parawood
Volume: 22.04 cu ft

Overall Dimensions: 38.00"w x 33.00"d x 28.00"h
Seat Depth: 22.0"
Seat Height: 18.0"
Arm Height from Floor: 23.25"
Arm Height from Seat: 5.25"
Seat Construction: Webbing

COLLECTION OVERVIEW

From the Caswell Collection

A soft, modern twist on traditional upholstery that shines a spotlight on big volume exaggerated curves. High-impact textiles with unique weaves create comfortable silhouettes that feel lavishly soft to the touch.

UATR-061-825P

Arrow Swivel Chair-Dobie Ecru | \$455.00 Your Cost



OVERVIEW

Angular arms and a crisp-edge back speak to the architectural influence of this show-stopping swivel. Upholstered in cream-colored performance-grade fabric exclusive to Four Hands, an abstract basket weave and waterfall cushion craft a look of casual luxury.

Ready for Immediate Shipment: 0

More Arriving Soon: Yes, Early December 2021

PRODUCT DETAILS

SKU: UATR-061-825P

Collection: Atelier

Weight: 79.37 lb

Colors: Dobie Ecru

Materials: 87% Co, 13% Pl

Volume: 21.19 cu ft

Overall Dimensions: 33.00" w x 38.00" d x 34.00" h

Seat Depth: 24.5"

Seat Height: 16"

Arm Height from Floor: 21"

Arm Height from Seat: 4"

Seat Construction: S-Spring

COLLECTION OVERVIEW

From the Atelier Collection

This fashion-forward upholstered collection mixes elegant fabrics with interesting design elements from stainless steel to exposed hardwoods. Each piece features North American-made hardwood frames, steel suspension and hand craftsmanship for quality and comfort. Beautiful forms and delightful details make for luxurious, high-style seating.

UATR-060-891P

Mila Swivel Chair-Brazos Dove | \$455.00 Your Cost



OVERVIEW

Sultry and sensible. Performance-grade upholstery hugs the curves of modern-minded seating, with a hidden swivel for a functional touch.

Ready for Immediate Shipment: 0

More Arriving Soon: Yes, Early January 2022

PRODUCT DETAILS

SKU: UATR-060-891P

Collection: Atelier

Weight: 68.34 lb

Colors: Brazos Dove

Materials: 63Pl(Uv),20Pl,8Pr-Co

Volume: 21.54 cu ft

Overall Dimensions: 35.00" w x 34.50" d x 27.00" h

Seat Depth: 24"

Seat Height: 16"

Arm Height from Floor: 26"

Arm Height from Seat: 9.5"

Seat Construction: Webbing

COLLECTION OVERVIEW

From the Atelier Collection

This fashion-forward upholstered collection mixes elegant fabrics with interesting design elements from stainless steel to exposed hardwoods. Each piece features North American-made hardwood frames, steel suspension and hand craftsmanship for quality and comfort. Beautiful forms and delightful details make for luxurious, high-style seating.

109728-001

Uma Swivel Chair-Palermo Pewter | \$960.00 Your Cost



OVERVIEW

Traditional vibes, modernized. Atop a 360-degree swivel, a unique duvet-style wrap places a subtly playful spin on thick-cut top-grain leather in a fresh, versatile grey.

Ready for Immediate Shipment: 0
More Arriving Soon: Yes, 4 to 6 weeks

PRODUCT DETAILS

SKU: 109728-001
Collection: Kensington
Weight: 72.75 lb
Colors: Palermo Pewter
Materials: Top Grain Leather
Volume: 16.32 cu ft

Overall Dimensions: 33.00" w x 34.00" d x 30.50" h
Seat Depth: 21.0"
Seat Height: 17.5"
Arm Height from Floor: 23.5"
Arm Height from Seat: 6.0"
Seat Construction: S-Spring

COLLECTION OVERVIEW

From the Kensington Collection

Simple elegance and romance. Each piece is made from hardwoods with handcrafted curves and detailed carving. The collection features upholstery options from velvet and natural linen or cotton to top-grain leathers. Rich color and texture bring sophistication to classic shapes with clean lines and just-right sizing.

106086-015

Kimble Swivel Chair-Noble Platinum | \$410.00 Your Cost



OVERVIEW

Expert tailoring creates a clean, sophisticated look, rich with come-hither comfort. A tight sit and barrel shape is softened via flange seam detailing and swivel feature and finished off with a petite lumbar cushion, for the perfect mix of shape and function.

Ready for Immediate Shipment: 0
More Arriving Soon: Yes, Mid March 2022

PRODUCT DETAILS

SKU: 106086-015
Collection: Atelier
Weight: 48.5 lb
Colors: Noble Platinum
Materials: 100% Polyester
Volume: 21.61 cu ft

Overall Dimensions: 29.50" w x 31.50" d x 34.00" h
Seat Depth: 20"
Seat Height: 18"
Arm Height from Floor: 24.5"
Arm Height from Seat: 6.5"
Seat Construction: S-Spring

COLLECTION OVERVIEW

From the Atelier Collection

This fashion-forward upholstered collection mixes elegant fabrics with interesting design elements from stainless steel to exposed hardwoods. Each piece features North American-made hardwood frames, steel suspension and hand craftsmanship for quality and comfort. Beautiful forms and delightful details make for luxurious, high-style seating.

105964-007

York Swivel Chair-Monterry Pebble | \$435.00 Your Cost



OVERVIEW

Small scale, substantial comfort. Precisely tailored seating in a pebbled fabric that offers a touch of light movement.

Ready for Immediate Shipment: 0

More Arriving Soon: Yes, Mid January 2022

PRODUCT DETAILS

SKU: 105964-007

Collection: Atelier

Weight: 70.55 lb

Colors: Burnt Sepia, Monterry Pebble

Materials: Solid Banak, 85% Pl, 15% Vi

Volume: 23.2 cu ft

Overall Dimensions: 31.50" w x 35.00" d x 28.50" h

Seat Depth: 25"

Seat Height: 20.5"

Arm Height from Floor: 23.5"

Arm Height from Seat: 6"

Seat Construction: S-Spring

COLLECTION OVERVIEW

From the Atelier Collection

This fashion-forward upholstered collection mixes elegant fabrics with interesting design elements from stainless steel to exposed hardwoods. Each piece features North American-made hardwood frames, steel suspension and hand craftsmanship for quality and comfort. Beautiful forms and delightful details make for luxurious, high-style seating.

229384-002

Harding Swivel Chair-Kerbey Taupe | **NEW** | \$730.00 Your Cost



OVERVIEW

Sculptural curves designed with sink-in comfort stack up to one stylish work of art. Upholstered in our liquid-repellent performance fabric bringing both heavy texture and a soft hand. Stacked swivel frame is crafted from solid ash.

Ready for Immediate Shipment: 0

More Arriving Soon: Yes, Late December 2021

PRODUCT DETAILS

SKU: 229384-002

Collection: Westgate

Weight: 83.77 lb

Colors: Kerbey Taupe, Natural Whitewash Ash

Materials: 96% Pl, 4% Pc, Solid Ash

Volume: 26.98 cu ft

Overall Dimensions: 38.00" w x 37.00" d x 28.00" h

Seat Depth: 23"

Seat Height: 17"

Arm Height from Floor: 28"

Arm Height from Seat: 11"

Seat Construction: S-Spring

COLLECTION OVERVIEW

From the Westgate Collection

Starting with thoughtfully selected materials like woven cane, top-grain leather, natural woods and modern metals, deliberate details make for statement-making upholstery styles with generous visual appeal.

226408-003

Audie Swivel Chair-Knoll Natural | \$480.00 Your Cost



OVERVIEW

For a uniquely fresh twist on traditional barrel seating, tightly tailored upholstery and dramatic channeling make a major statement that's fun and sophisticated alike. Hidden 360-degree swivel adds a modern finishing touch.

Ready for Immediate Shipment: 0
More Arriving Soon: Yes, Mid May 2022

PRODUCT DETAILS

SKU: 226408-003
Collection: Belfast
Weight: 66.14 lb
Colors: Knoll Natural
Materials: 95% Pl, 5% Pc
Volume: 27.4 cu ft

Overall Dimensions: 35.50" w x 35.75" d x 28.00" h
Seat Depth: 22.75"
Seat Height: 17.0"
Seat Construction: S-Spring

COLLECTION OVERVIEW

From the Belfast Collection

Postwar period design inspirations mix with mid-century Danish-American styling to elegant effect. Airy forms, sweeping lines and bowed, sculptural silhouettes are generously proportioned for a comfortable sit. Solid American oak, walnut and ash woods are finished in deep browns, natural blondes and wire-brushed dry blacks to highlight wonderful grain patterns.

225818-001

Dahlia Swivel Chair-Knoll Natural | \$480.00 Your Cost



OVERVIEW

Fashionably innovative. A channel-upholstered three-tier base supports shapely seating in a versatile cream boucle, while a 360-degree swivel adds a modern finishing touch.

Ready for Immediate Shipment: 0
More Arriving Soon: Yes, Early April 2022

PRODUCT DETAILS

SKU: 225818-001
Collection: Oslo
Weight: 61.73 lb
Colors: Knoll Natural
Materials: 95% Pl, 5% Pc
Volume: 21.68 cu ft

Overall Dimensions: 30.25" w x 30.00" d x 30.25" h
Seat Depth: 20.5"
Seat Height: 17.5"
Arm Height from Floor: 24.0"
Arm Height from Seat: 6.5"
Seat Construction: Webbing

COLLECTION OVERVIEW

From the Oslo Collection

Dramatic angles and pristine tailoring yield crisp, clean upholstered seating styles, from statement sofas to eye-catching accent chairs, modern swivels and more. Made from soft yet durable materials like flax and linen, fresh styling and forward-thinking details bring modernity to living room lounging.

228249-001

Marley Chair-Thames Cream | **NEW** | \$685.00 Your Cost



OVERVIEW

Timeless sophistication with a sensible spin. Made from water-repellant high-performance fabric in a versatile light cream, relaxed, armless-style seating features billowy cushioning atop a solid oak base.

Ready for Immediate Shipment: 0

More Arriving Soon: Yes, Early February 2022

PRODUCT DETAILS

SKU: 228249-001

Collection: Bina

Weight: 77.16 lb

Colors: Rustic Fawn, Thames Cream

Materials: Solid Oak, 66%PI, 19%Pc, 15%LJ

Volumes: 26.1 cu ft

Overall Dimensions: 36.50"w x 36.50"d x 33.50"h

Seat Depth: 21.75"

Seat Height: 17.25"

Seat Construction: Webbing

COLLECTION OVERVIEW

From the Bina Collection

Merge worlds old and new with livable, rustic-modern furnishings in a range of contemporary shapes. Crafted by hand from sustainably harvested and reclaimed woods, a mix of rough and refined textures, patinas and tones add a sense of timeless history to any space. One-of-a-kind pieces offer a dramatic focal point, and blend beautifully with a range of decorating inspirations.

224428-001

Tabitha Chair-Chilton Pepper | \$455.00 Your Cost



OVERVIEW

A fresh update on traditional U-back seating, with a smoked oak cradle base, sloped arms and tweed-like upholstery with plenty of depth by way of black, white and grey yarns.

Ready for Immediate Shipment: 0

More Arriving Soon: Yes, Early March 2022

PRODUCT DETAILS

SKU: 224428-001

Collection: Farrow

Weight: 55.12 lb

Colors: Chilton Pepper, Smoked Oak

Materials: 80% PI, 20% Pc, Solid Oak

Volume: 23.8 cu ft

Overall Dimensions: 32.00"w x 35.50"d x 28.25"h

Seat Depth: 28.25"

Seat Height: 19"

Arm Height from Floor: 28.25"

Arm Height from Seat: 4"

Seat Construction: Webbing

COLLECTION OVERVIEW

From the Farrow Collection

Inspired by elegant European styling and classic menswear, boucle and wool-like textiles deliver textural depth to expertly tailored seating styles, with hand-brushed surfaces and subtle cross-hatching patterns adding an upscale feel to fine upholstery.

The background features a watercolor-style pattern. It consists of overlapping, semi-transparent circles in various shades of blue, ranging from a deep navy to a lighter, muted teal. Superimposed on these circles are delicate, branching structures in a light gold or beige color, resembling coral or dried plant stems. The overall aesthetic is soft and organic.

PRODUCTS
SOFAS
ELEANOR RIGBY



Customize

Fabric

Depth

Height

Length



All sofas can be configured as
sectionals!

Surrey



AS SHOWN
30 Sofa in Versailles Golden (100% Top grain bison leather)

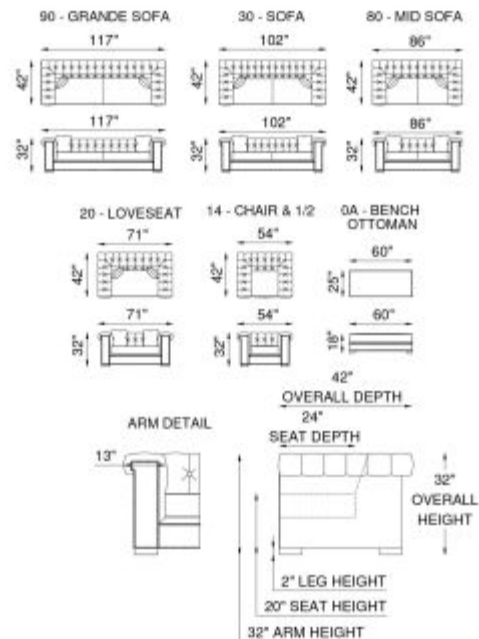
SPRING SYSTEM
Tempered steel coil spring drop in unit.

BACKS
Tempered steel 8 gauge springs, covered by high resiliency foam and fibers.

SEATS
Individually pocketed coil springs encased in high resiliency foam, wrapped in leather/down/polyester blend envelopes that are channeled to prevent bunching.

FRAME
Combination of hardwood/furniture grade laminate - corner blocked, glued & stapled.

Surrey



At Eleanor Rigby Home you can choose from our curated range of fabrics and leathers or provide your own. We offer a range of customization options, from hand-stitched leather to hand-finished treatments, metal and wood finishes. We welcome client specific designs and offer in-house design support and hands-on oversight throughout every phase of production. Visit Eleanorrigbyhome.com to see all options and to our customer service link for questions.

Wembley



AS SHOWN
30 Sofa in Bellaria 606 (80% Polyester, 20% Cotton)

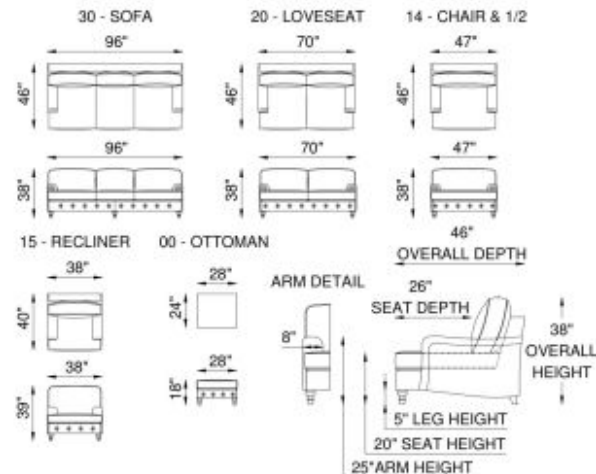
SPRING SYSTEM
Tempered steel coil spring drop in unit.

BACKS
Feather/down/polyester blend in leather proof cotton ticking that is channelled to prevent bunching.

SEATS
Individually pocketed coil springs encased in high resiliency foam, wrapped in feather/down/polyester blend envelopes that are channelled to prevent bunching.

FRAME
Combination of hardwood/furniture grade laminate - corner blocked, glued & stapled.

Wembley



At Eleanor Rigby Home you can choose from our curated range of fabrics and leathers or provide your own. We offer a range of customization options, from hand-stitched leather to hand-finished treatments, metal and wood finishes. We welcome client specific designs and offer in-house design support and hands-on oversight throughout every phase of production. Visit Eleanorrigbyhome.com to see all options and to our customer service link for questions.

Rebecca



AS SHOWN

30 Sets in Ballerina 111 (80% Polyester, 20% Cotton)

SPRING SYSTEM

Tempered steel 8 gauge zig zag spring.

BACKS

Feather/down/polyester blend in leather proof cotton ticking that is channelled to prevent bunching.

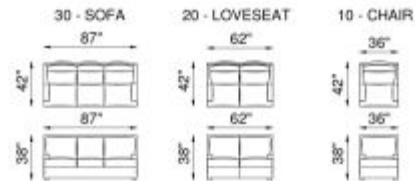
SEATS

Individually pocketed coil springs encased in high resiliency foam, wrapped in feather/down/polyester blend envelopes that are channelled to prevent bunching.

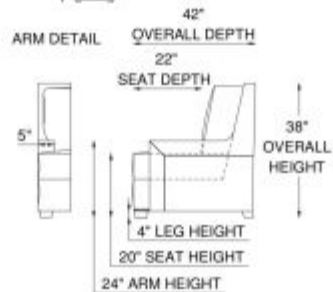
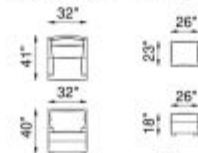
FRAME

Combination of hardwood/furniture grade laminate - corner blocked, glued & stapled.

Rebecca



15 - RECLINER 00 - OTTOMAN



At Eleanor Rigby Home you can choose from our curated range of fabrics and leathers or provide your own. We offer a range of customization options, from hand-stitched leather to hand-finished treatments, metal and wood finishes. We welcome client specific designs and offer in-house design support and hands-on oversight throughout every phase of production. Visit Eleanorrigbyhome.com to see all options and to our customer service link for questions.

Malibu



AS SHOWN

30 Sofa in Verdeco Gray (100% Top grain leather)

SPRING SYSTEM

Tempered steel coil spring drop-in unit.

BACKS

Feather/down/polyester blend in leather proof cotton ticking that is channeled to prevent bunching.

SEATS

Individually pocketed coil springs encased in high resiliency foam, wrapped in feather/down/polyester blend envelopes that are channeled to prevent bunching.

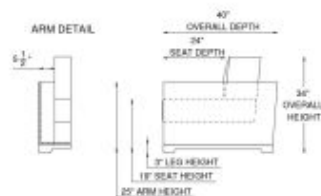
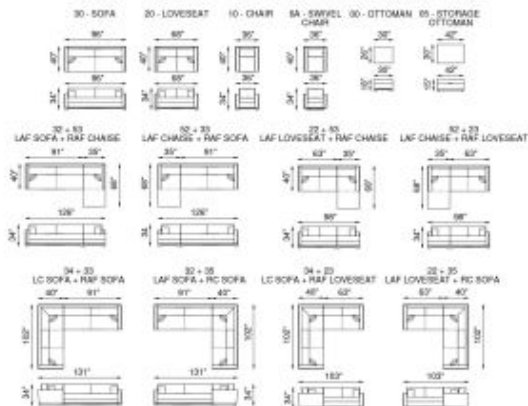
BASE

Reclaimed wood.

FRAME

Combination of hardwood/furniture grade laminate - corner blocked, glued & stapled.

Malibu



At Eleanor Rigby Home you can choose from our curated range of fabrics and leathers or provide your own. We offer a range of customization options, from hand-stitched leather to hand-finished treatments, metal and wood finishes. We welcome client specific designs and offer in-house design support and hands-on oversight throughout every phase of production. Visit Eleanorrigbyhome.com to see all options and to our customer service link for questions.

Amore



AS SHOWN

30 Seats in Windsor Wheat (100% Top grain leather)

SPRING SYSTEM

Tempered steel coil spring drop in unit.

BACKS

Tempered steel 8 gauge springs, covered by high resiliency foam and fibers.

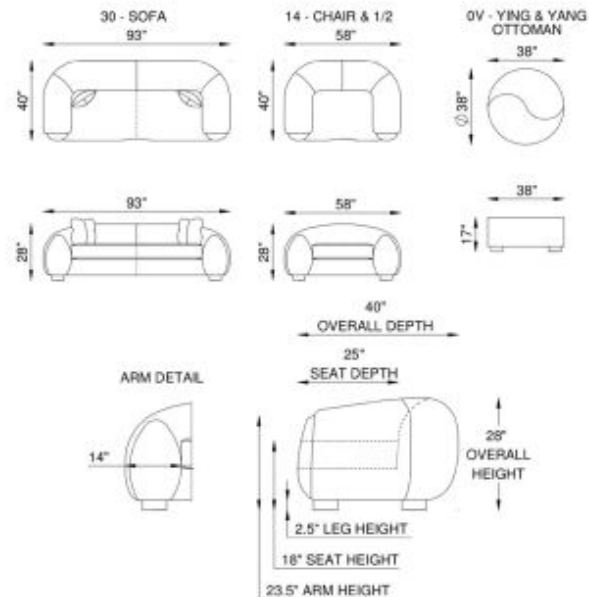
SEATS

Individually pocketed coil springs enclosed in high resiliency foam, wrapped in leather/down/polyester blend envelopes that are channelled to prevent bunching.

FRAME

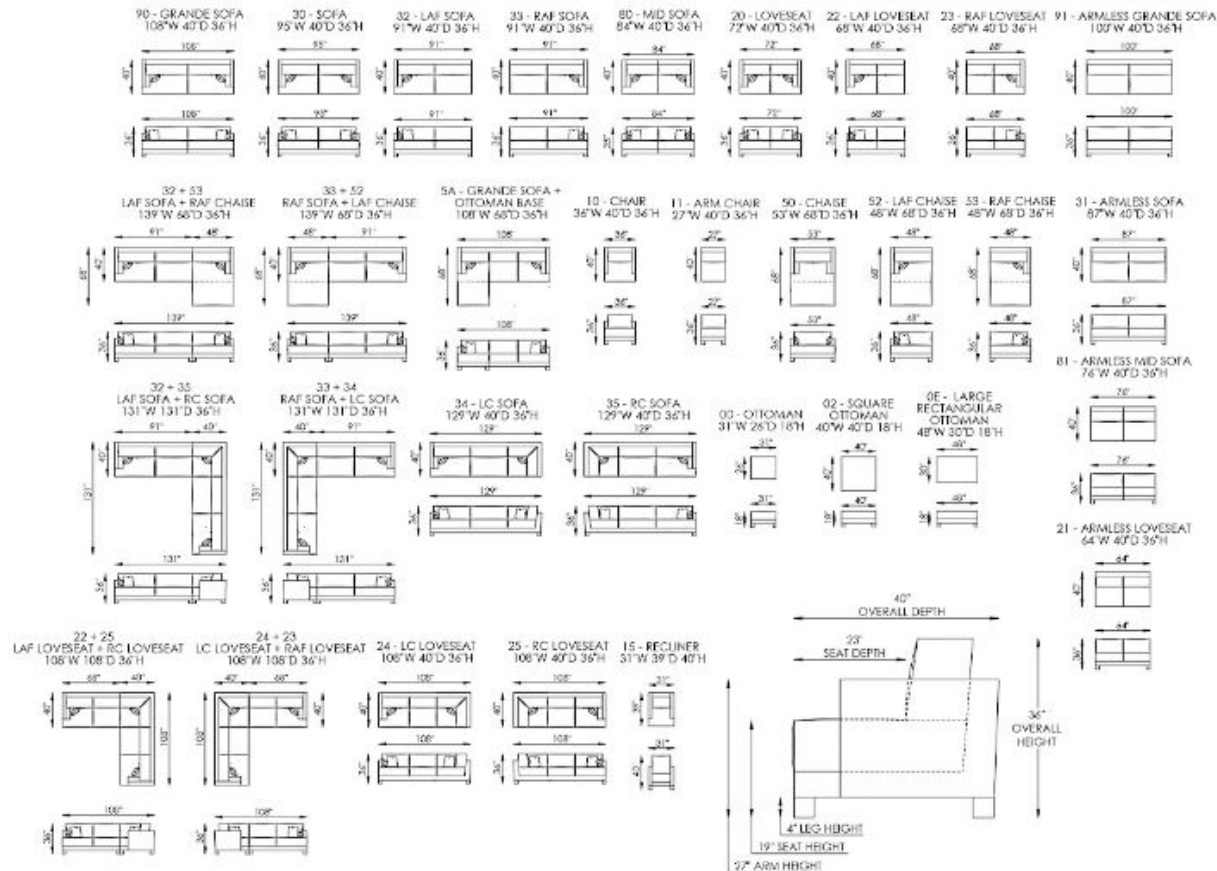
Combination of hardwood/furniture grade laminate - corner blocked, glued & stapled.

Amore

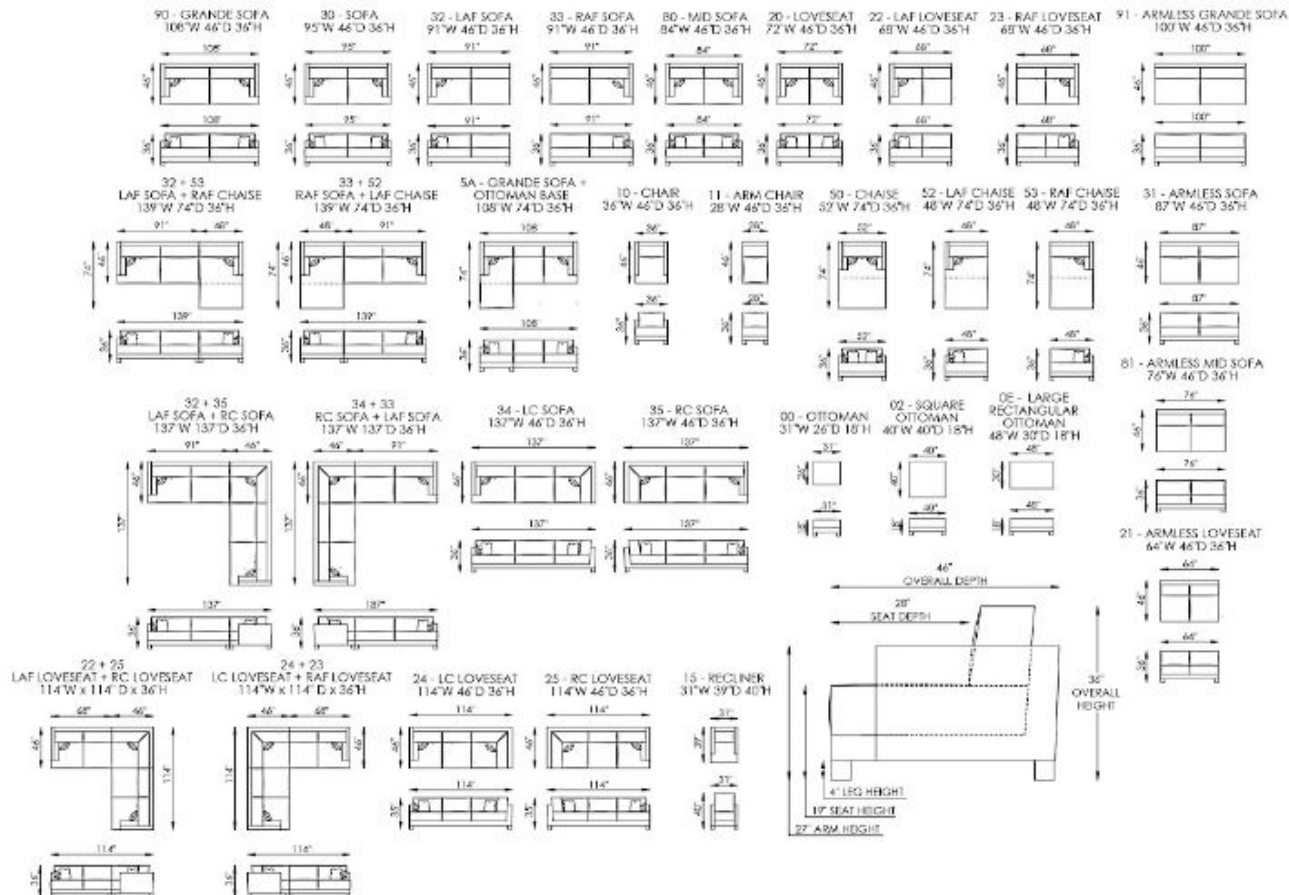


At Eleanor Rigby Home you can choose from our curated range of fabrics and leathers or provide your own. We offer a range of customization options, from hand-stitched leather to hand-finished treatments, metal and wood finishes. We welcome client specific designs and offer in-house design support and hands-on oversight throughout every phase of production. Visit eleanorrigbyhome.com to see all options and our customer service link for questions.

CLASSIC LEATHER / FABRIC



LUXE LEATHER / FABRIC



The background features a watercolor-style pattern. It consists of overlapping, semi-transparent circles in various shades of blue, ranging from a deep, dark blue to a lighter, muted teal. Superimposed on these circles are delicate, branching structures in a golden-brown or light tan color, resembling bare tree branches or coral. The overall aesthetic is soft and artistic.

PRODUCTS
COFFEE TABLES
MERCANA



Coffee tables: Stone, Wood, Metal

Clapp I Set of 2 (41" & 38") Round Brown Wood Top Black Iron Base Nesting Coffee Tables

SKU: 50350



STURDY WITHOUT BEING BULKY

These coffee tables are beautifully crafted from solid Mango wood. Each round top rests upon an iron frame that curves outwards, creating a light, airy look.



ROUGH SAWN FINISH

A warm brown finish accentuates the planked tabletop design and highlights the applied saw markings in the wood. The iron frame features an unfussy, matte black finish.



NESTED VERSATILITY

These tables can be stacked or pulled into practical configurations to suit different needs. Nest them together as a bold focal piece or use them individually to serve in different areas.



EASYGOING STYLE

The wood and metal combination works well across a number of laid-back design styles, whether farmhouse, lakeside, woodlands or industrial.

A duo of versatile nesting tables in solid wood and metal



AVAILABLE IN
 1 Color
 1 Size
 1 Related Product



EXPLORE ONLINE

Clapp I Set of 2 (41" & 38") Round Brown Wood Top Black Iron Base Nesting Coffee Tables

SKU: 50350

FEATURES & SPECIFICATIONS	
Product Style	Retained Modern, Industrial, Contemporary, Modern, Urban, Loft
Product Type	Coffee Table Set
Set Type	Nesting Tables
Number of Tables Included	2
Base Type	Frame
Shelves Included?	No
Drawers Included?	Yes
Cabinets Included?	No
Number of Cabinets	N/A
Adjuster Type	Adjuster Type C/F
Storage Included?	No
Roofs Included?	N/A

DIMENSIONS & WEIGHT	
Length	40.25 inches
Width	40.25 inches
Height	19.0 inches
CGH	5.500
Weight	30.25 lbs (140.00 kg)
Box Size	48.5" x 48.5" x 21.75"
Box Weight	115.25 lbs (52.00 kg)
Top Shape	Round
Length when Fully Extended	17"
Small Table Height - Top to Bottom	12.0"
Small Table Length - End to End	43.0"
Small Table Width - Front to Back	43.0"
Size	Medium (Under 50" Length)

MATERIALS & FINISHES	
Dominant Color	Brown
Main Material	Solid Wood
Natural Variation Type	Natural Wood Grain Color Variation, Wood Knots
Purposeful Distressing Type	No Distressing
Reclaimed Wood?	No
Top Material	Solid Wood
Top Material Details	Mango Wood
Top Color	Brown - Medium
Base Material	Metal
Base Material Details	Iron
Wood Species	Mango

ASSEMBLY REQUIREMENT	
Assembly Required?	Yes
Additional Tools Required	All Tools Included
Avoid Power Tools?	Yes
Level of Assembly	Partial

Glenn 54x30 Rectangular Brown Solid Wood Black Metal Base w/3 Drawers Coffee Table

SKU: 69016



SOLID WOOD AND METAL

This coffee table, made from solid Mango wood, comprises a shelf-like, wooden top and separate wooden body with six drawers. The top and body are supported as a unit by a sturdy iron frame.

A modern coffee table with loopy metal work and six handy drawers



DARK BROWN AND BLACK FINISH

A dark brown finish with golden undertones accentuates the natural grain of the wood. The metal legs have an unfussy, matte black finish.



CONVENIENT STORAGE

Its six drawers and two surface areas are perfect for tidying away living room paraphernalia and keeping everyday essentials within reach. The drawers are furnished with loopy, iron handles – a small design feature that packs a big visual punch!



MODERN INSPIRED DESIGN

Its straightforward design makes it easy to incorporate the Glenn into no-fuss, modern spaces.



AVAILABLE IN

1 Color

1 Size

6 Related Products



EXPLORE ONLINE

Glenn 54x30 Rectangular Brown Solid Wood Black Metal Base w/3 Drawers Coffee Table

SKU: 69016

FEATURES & SPECIFICATIONS

Product Style	Relaxed Modern, Mid-Century Modern, Tropical, Global, Contemporary, Modern/Transit
Product Type	Coffee Table
Number of Tables Included	1
Base Type	4 Legs
Shelves Included?	Yes
Number of Shelves	1
Drawers Included?	Yes
Number of Drawers	6
Number of Shelves	1
Soft Close or Self Close Drawers?	No
Casters Included?	No
Storage Included?	Yes
Hidden Storage Compartment?	No
Trunk Storage?	No

DIMENSIONS & WEIGHT

Length	54.8 inches
Width	30.0 inches
Height	17.0 inches
CSM	0.4576
Weight	150.00 lbs (68.04 kg)
Box Size	56.00 x 32.00 x 34.00
Box Weight	162.00 lbs (73.48 kg)
Top Shape	Rectangular
Shelf Interior Height - Distance Between Shelves	6.25"
Shelf Interior Width - Side to Side	28"
Shelf Interior Depth - Front to Back	28"
Drawer Interior Height - Top to Bottom	7.5"
Drawer Interior Width - Side to Side	18.25"
Drawer Interior Depth - Front to Back	18.5"
Size	Large (Greater than 50" Length)

MATERIALS & FINISHES

Dominant Color	Brown
Main Material	Solid Wood
Natural Variation Type	Natural Wood Grain Color Variation, Wood Knots
Purposeful Distressing Type	No Distressing
Reclaimed Wood?	No
Top Material	Solid Wood
Top Material Details	Mango Wood
Top Color	Brown - Medium
Base Material	Metal
Base Material Details	Iron
Wood Species	Mango
Drawer Glide Material	Metal

ASSEMBLY REQUIREMENT

Assembly Required?	Yes
Suggested Number of People	2
Estimated Time to Assemble	20-30 Minutes
Additional Tools Required	#8 Tools Included
Avail Power Tools?	Yes
Level of Assembly	Partial
Assembly Details	Attach legs to body(1/1), attach # 8, 10(1/1), side # 8(2/1)

Kandinsky 50" Square Brown Solid Wood Table & Base Coffee Table
SKU: 68449-AB



RECLAIMED WOOD AND METAL

This coffee table is made from 100% reclaimed wood. The top rests upon a solid base in a t-shape profile and features a striking metal inlay scored with a geometric pattern.



RECLAIMED CHARACTER

The reclaimed wood has a natural finish with warm undertones that show off its unique character marks. The iron inlay features a beautiful, antique gold finish.

Each piece of reclaimed wood ages differently and will carry different characteristics from its life before. Please expect imperfections in the wood, along with variations in color, texture, and finish.



CONSCIOUS CONSUMPTION

Made from reclaimed wood, the Kandinsky is a more environmentally-responsible solution for sustainability-conscious consumers.



RUSTIC APPEAL

Beautifully worn and exposed, this piece blends effortlessly into industrial interiors.

Reclaimed wood repurposed into a t-shape coffee table with a striking metal inlay



Kandinsky 50" Square Brown Solid Wood Table & Base Coffee Table
SKU: 68449-AB

FEATURES & SPECIFICATIONS	
Product Style	Industrial, Rustic, Modern, Sustainability, Lodge, Wood, Cast Concrete
Product Type	Coffee Table
Number of Tables Included	1
Base Type	pedestal
Shelves Included?	No
Drawers Included?	No
Cabinets Included?	No
Storage Included?	No

DIMENSIONS & WEIGHT	
Length	50.0 inches
Width	50.0 inches
Height	13.0 inches
CDM	0.000
Weight	128.00 lbs (58.00 kg)
Box A Size	54.00 x 4.00' x 53.00'
Box A Weight	152.35 lbs (69.10 kg)
Box B Size	36.00 x 14.00' x 30.00'
Box B Weight	44.84 lbs (20.34 kg)
Top Shape	Square
Size	Large (Greater than 50" Length)

MATERIALS & FINISHES	
Dominant Color	Gold, Brown
Main Material	Reclaimed Wood
Natural Variation Type	Natural Wood Grain Color Variation, Wood Knots
Purposeful Distressing Type	Wood Scoring & Sub Through, Wood Scoring & Sub Through
Reclaimed Wood?	Yes
Top Material	Reclaimed Wood, Metal
Top Material Details	Iron
Top Color	Brown - Medium, Gold - Antique
Base Material	Solid Wood
Wood Species	N/A

ASSEMBLY REQUIREMENT	
Assembly Required?	Yes
Additional Tools Required	All Tools Included
Avoid Power Tools?	Yes
Level of Assembly	Partial

Maddox Set of 2 Brown Solid Wood Top Black Metal Base Nesting Coffee Tables

SKU: 67843-AB



SOLID WOOD AND METAL

Each table, constructed from solid Mango wood, is supported on one side by a U-shaped iron leg, and the other side by a wooden, slab leg. They nest perpendicular together, creating an interesting, geometric profile.



MEDIUM BROWN FINISH

Not too dark nor too light, the wood is smooth textured with a warm, brown finish that highlights its natural beauty. The iron legs feature an unfussy, matte black finish.

NESTED VERSATILITY

These tables can be stacked or pulled into practical configurations to suit different needs. Nest them together as a bold focal piece or use them individually to serve in different areas.



MODERN INSPIRED DESIGN

Their clean, linear profile make it easy to incorporate the Maddox coffee tables into a number of design styles. They work especially well in modern interiors.



A duo of rectangular nesting tables in solid wood and metal



AVAILABLE IN

1 Color
1 Size

4 Related Products



EXPLORE ONLINE

Maddox Set of 2 Brown Solid Wood Top Black Metal Base Nesting Coffee Tables

SKU: 67843-AB

FEATURES & SPECIFICATIONS	
Product Style	Revised Modern, Mid-Century Modern, Minimalist, Wood-Covered Contemporary
Product Type	Coffee Table Set
Set Type	Nesting Tables
Number of Tables Included	2
Base Type	Steel
Shelves Included?	No
Drawers Included?	No
Cabinets Included?	No
Storage Included?	No

DIMENSIONS & WEIGHT	
Length	26.0 inches
Width	34.0 inches
Height	20.5 inches
CRM	3.026
Weight	100.00 lbs (45.36 kg)
Box A Size	59.00 x 18.50 x 26.00 H
Box A Weight	54.00 lbs (24.50 kg)
Box B Size	37.00 x 23.00 x 23.00 H
Box B Weight	46.00 lbs (20.87 kg)
Top Shape	Rectangular
Small Table Height - Top to Bottom	20.5"
Small Table Length - End to End	34.25"
Small Table Width - Front to Back	29.0"
Size	Large (Greater than 99" Length)

MATERIALS & FINISHES	
Dominant Color	Brown
Main Material	Solid Wood
Natural Variation Type	Natural Wood Grain Color Variation, Wood Knots
Purposeful Distressing Type	No Distressing
Reclaimed Wood?	No
Top Material	Solid Wood
Top Material Details	Mango Wood
Top Color	Brown - Medium
Base Material	Metal, Solid Wood
Base Material Details	Iron, Mango Wood
Wood Species	Mango

ASSEMBLY REQUIREMENT	
Assembly Required?	No

Reinhold 48x30 Oval Marble Top Gold Metal Base Coffee Table

SKU: 69051-AB



MARBLE AND METAL

This coffee table's marble top is supported by angular iron legs with crescent-shape cutaways that create interesting side profiles.



WHITE AND GOLD FINISH

The white marble top has creamy undertones with gray and beige veining throughout, while the legs feature a beautiful antique gold finish.

Marble is a natural material. Each piece has its own beautiful intricacies, and some may carry naturally occurring fissures. Please expect variations in color and texture.



LIVE EDGE

The marble has a chipped-away live edge that adds textural depth and interest to the piece.



ENDURINGLY ELEGANT

The Reinhold coffee table is the perfect way to add grown-up allure and sophistication to a space.

Marble and gold unite in an oval coffee table with interesting side profiles



AVAILABLE IN

1 Color
1 Size
2 Related Products



EXPLORE ONLINE

Reinhold 48x30 Oval Marble Top Gold Metal Base Coffee Table

SKU: 69051-AB

FEATURES & SPECIFICATIONS	
Product Style	Lean, Glam, Retired Modern, Transitional
Product Type	Coffee Table
Number of Tables Included	1
Base Type	Frame
Shelves Included?	No
Drawers Included?	No
Cabinets Included?	No
Storage Included?	No

DIMENSIONS & WEIGHT	
Length	48.0 inches
Width	30.0 inches
Height	18.0 inches
GM	5.3725
Weight	119.05 lbs (54.00 kg)
Box A Size	53.54" x 6.59" x 37.59"
Box A Weight	84.00 lbs (38.10 kg)
Box B Size	30.04" x 9.09" x 20.04"
Box B Weight	48.89 lbs (22.16 kg)
Top Shape	Oval

MATERIALS & FINISHES	
Dominant Color	White
Main Material	Genuine Marble
Natural Variation Type	Natural Marble Color & Feature Variation, Live Edge
Responsible Dressing Type	Wood Sealing & Rub Through
Top Material	Solid Wood
Top Material Details	Marble (Marble is a natural material. Each piece has its own beautiful intricacies. Some may carry naturally occurring fissures. Please expect variations in color and texture.)
Top Color	White
Base Material	Metal
Base Material Details	Iron

ASSEMBLY REQUIREMENT	
Assembly Required?	Yes
Additional Tools Required	All Tools Included
Avail. Four-Turn?	Yes
Level of Assembly	Partial

Trey 48x46 Rectangular Brown Solid Wood Top Table Black Metal Frame Two-Tier Coffee Table

SKU: 68218



SOLID MANGO WOOD AND METAL

Like its name implies, the Trey coffee table comprises two-tray-like tops supported by an iron frame in a shelf-like structure.

A rectangular coffee table with a handy shelf-like design



MEDIUM BROWN AND BLACK FINISH

The Solid Mango wood has a soft, medium brown finish, while the metal frame has an unfussy, matte black finish.



MORE SURFACE SPACE

Its shelf-like design provides more surface space for displaying objects and keeping everyday essentials within reach.



VERSATILE STYLE

With its neutral aesthetic, the Trey coffee table has universal appeal that works well across design styles, whether modern, industrial, coastal, woodlands, lakeside or traditional.

AVAILABLE IN

1 Color
1 Size

3 Related Products



EXPLORE ONLINE

Trey 48x46 Rectangular Brown Solid Wood Top Table Black Metal Frame Two-Tier Coffee Table

SKU: 68218

FEATURES & SPECIFICATIONS	
Product Style	Relaxed Modern, Industrial, Contemporary, Modern, Urban, Loft, White Gold, Contemporary
Product Type	Trey Top
Number of Tables Included	1
Base Type	Frame
Shelves Included?	No
Drawers Included?	No
Cabinets Included?	No
Storage Included?	No

DIMENSIONS & WEIGHT	
Length	48.0 inches
Width	46.0 inches
Height	17.0 inches
CBM	0.663
Weight	56.00 lbs. 129.09 kg
Box Size	56.00 x 48.00 x 47.00
Box Weight	115.00 lbs. 129.09 kg
Top Shape	Rectangular
Size	Medium (Under 50" Length)

MATERIALS & FINISHES	
Dominant Color	Brown
Main Material	Solid Wood
Natural Variation Type	Natural Wood Grain Color Variation, Wood Knots
Purposeful Dressing Type	No Dressing
Reclaimed Wood?	No
Top Material	Solid Wood
Top Material Details	Mango Wood
Top Color	Brown - Medium
Base Material	Metal
Base Material Details	Iron
Wood Species	Mango

ASSEMBLY REQUIREMENT	
Assembly Required?	Yes
Additional Tools Required	All Tools Included
Need Power Tools?	Yes
Level of Assembly	Partial



PRODUCTS
FIREPLACES
WOODLAND DIRECT



Fireplaces

- Wood burning
- Electric
- Gas

SPECIFICATIONS

Type: Vent Free

Fuel Type: Natural Gas | Propane

Ignition: Electronic

Overall Depth: 6 7/8"

Maximum Heat Output: 9,000
BTUs

Assembly Required: Required

Style: Single Face Fireplace

Certification: ANSI Z21.11.2 |
CSA Certified

Overall Width: 32 6/16"

Overall Height: 22"

Efficiency: 99.9%



SPECIFICATIONS

Type: Ventless

Style: Single Face Fireplace

Fuel Type: Natural Gas | Propane

Venting Type: Ventless

Certification: UL Listed

Ignition: Intermittent Pilot Ignition |
Millivolt

Material: Steel

Color Family: Black

Overall Width: 29 1/4"

Overall Depth: 13 9/16"

Overall Height: 19 3/8"

Heat Output: 10,000 BTUs | 20,000 BTUs

Viewing Width: 25 7/8"

Minimum Fireplace Depth: 13 1/2"

Minimum Fireplace Height: 19 3/8"

Viewing Height: 14 5/8"

Minimum Fireplace Width: 15 3/4" (Back)
| 27 1/2" (Front)

Burning Display: Fireglass

Efficiency: 99.9%

Color: Black

Assembly Required: Required

Item Weight: 51 lbs.





COME VISIT
SOON!