

BOTANICAL LIBRARY

“TO PURSUE AND SPREAD KNOWLEDGE
OF THE EARTH, FOR THE EARTH.”



MONFERRATO & MEYERS DESIGNS



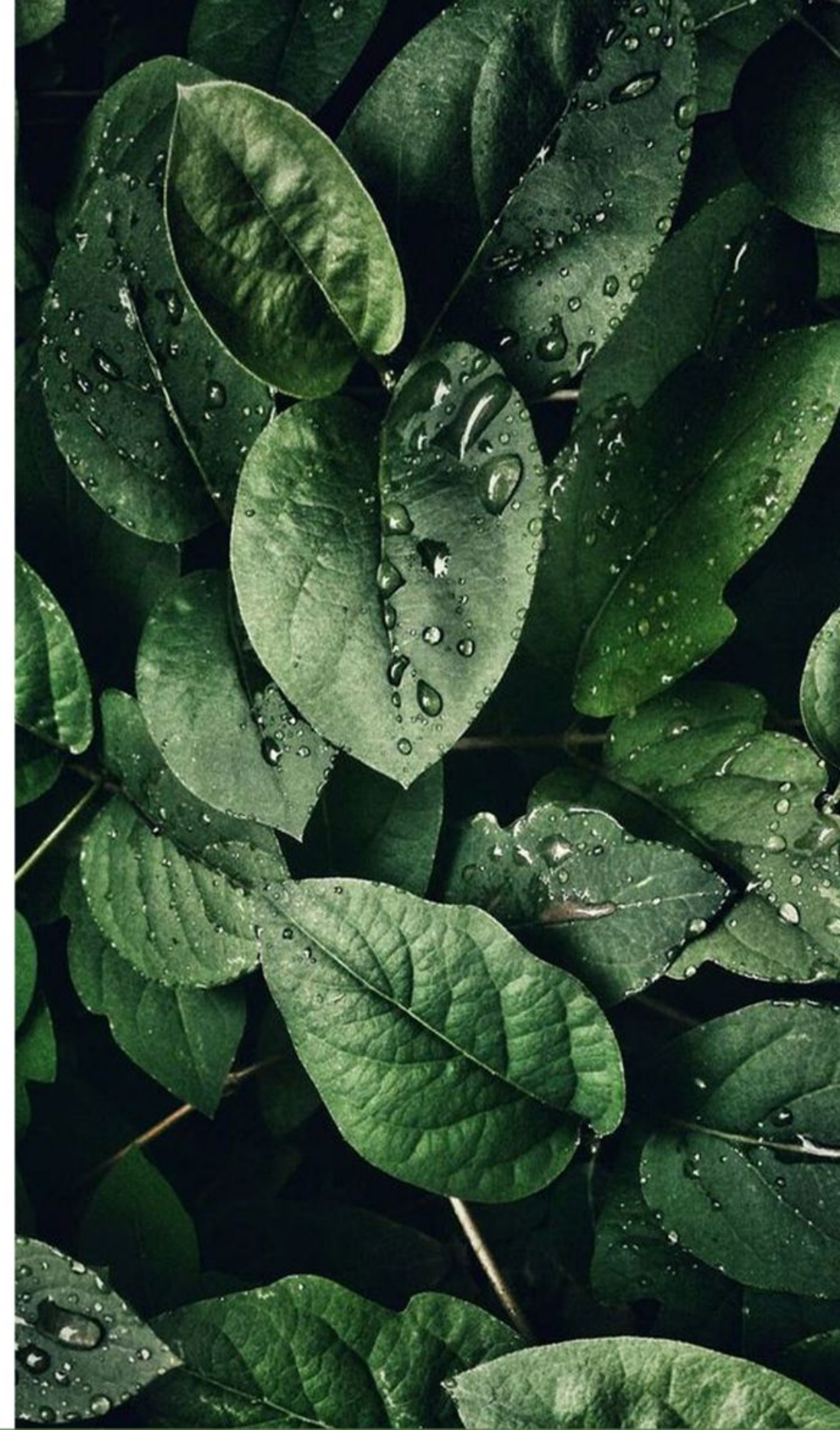
TABLE OF CONTENTS

- 1 TITLE PAGE
- 2 TABLE OF CONTENTS
- 3 CONCEPT BRIEF
- 4 CONCEPT BOARD
- 5 CLIENT PROFILE
- 6 JOURNEY MAP
- 7 ADJACENCY DIAGRAMS: FIRST FLOOR
- 8 ADJACENCY DIAGRAMS: MEZZANINE
- 9 FLOOR PLAN: FIRST FLOOR
- 10 FLOOR PLAN: MEZZANINE
- 11 INTERIOR MATERIALS
- 12 VENDORS
- 13 PROXEMICS
- 14 ACCESSIBILITY
- 15 POINT OF VIEW: RECEPTION
- 16 POINT OF VIEW: PRIVATE STUDY AREA
- 17 POINT OF VIEW: CAFE
- 18 POINT OF VIEW: SPIRAL RAMP GREENHOUSE
- 19 POINT OF VIEW: DISPLAY CASE
- 20 POINT OF VIEW: THERAPY ROOMS
- 21 POINT OF VIEW: RESTROOM
- 22 GREEN CARPET GALA FLYER

CONCEPT BRIEF

The Botanical Library is a community driven technological and educational hub in downtown Los Angeles designed by the Monferrato & Meyers Design Group. Located at 501 W Olympic Blvd, Los Angeles, the library serves the downtown community through integration of botanical life and plant care education, community events, and the contribution of technological and educational tools to be utilized by all.

In addition to providing the Los Angeles community with educational resources and community events, the Botanical Library will also create a positive impact on the city and the surrounding environment. The design of the building will be implemented with LEED qualities and sustainability at its core, featuring the use of natural, recycled, and environmentally friendly materials. Furthermore, the Botanical Library will be developed with universal design in mind, in order to create an accessible and enjoyable experience for all.



CONCEPT BOARD



size, of yellow and rose, showed the ground, hiding acorns and chestnuts; the dogs rolled among them, and scampered after them as they fluttered through the heavy air, and barked at bead-eyed only, through a break in the wood- and gold, and beyond the old its wind coming in the sunshine, and lingering before it. and with repose it looked; times the old M. F. H.'s day, when the with guests, and the woods and crack of rifles or the ringing horn; the changed: since the sad winning smile of the first Charles had rested on gallant cavaliers, marshalling to the signal of boot-and-saddle; but the halo of old romance was still there. Now came the sound of hoofs, the rustling of crisp dead leaves, and riding like a king under canopies of crimson and gold, came a lithe young

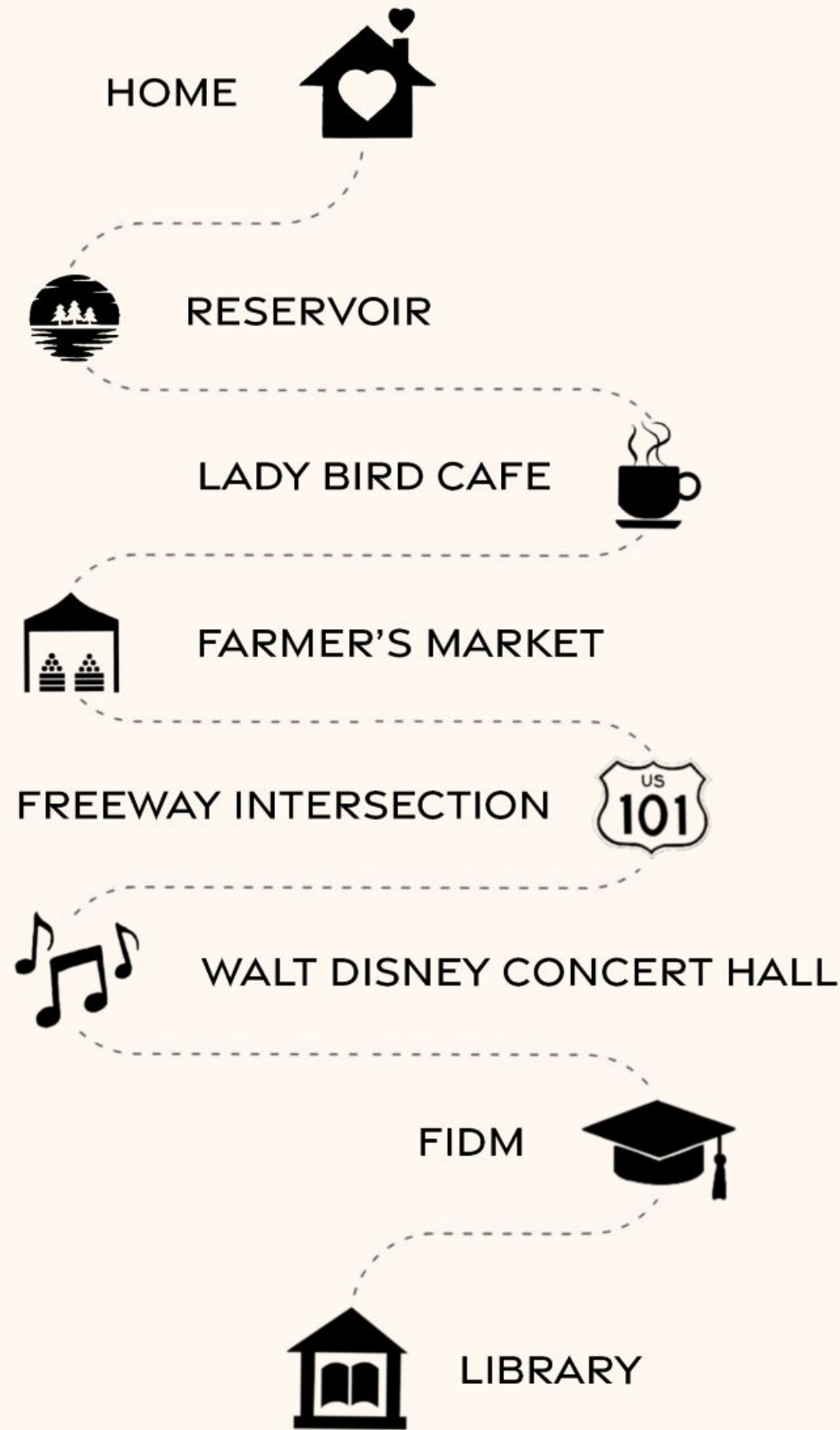


CLIENT PROFILE



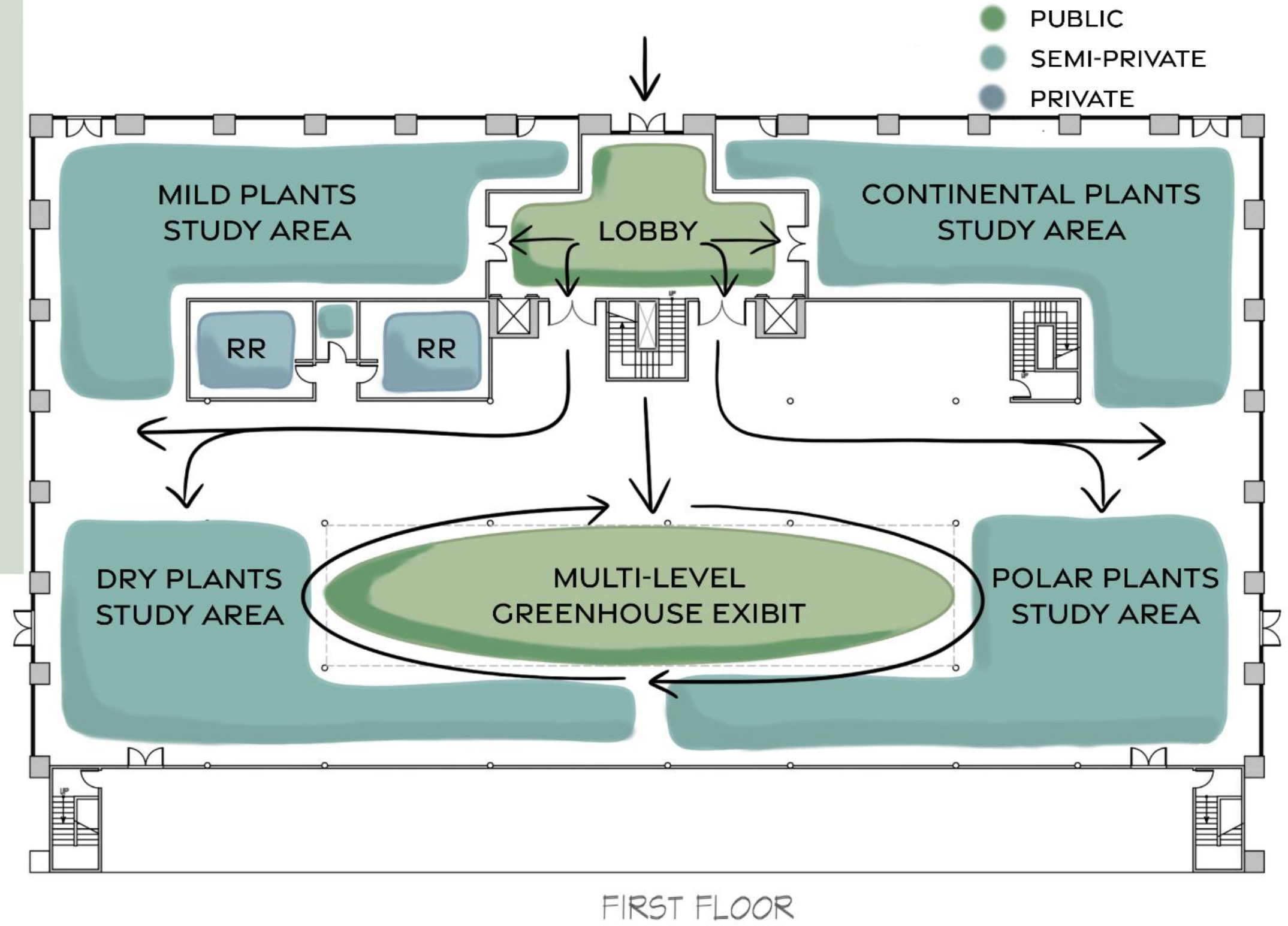
A frequent visitor of the Botanical Library is our dear friend Betty. She is a 28 year old woman, living in Echo Park, Los Angeles. She currently works as a teacher's aid at Downtown Magnets High School. She works closely with students with special needs to expand their education, interpersonal and intrapersonal skills. In her spare time, she loves to feed the ducks at Echo Park Lake, read her book of choice at her favorite cafe - Lady Bird Cafe, and visit the Botanical Library in downtown LA. She enjoys taking plant care classes, browsing the indoor, multi story greenhouse and reading all the library has to offer regarding regional botanicals. While she often comes alone, she also organizes field trips for her students and partakes in the multiple activities the library has to offer.





ADJACENCY DIAGRAMS

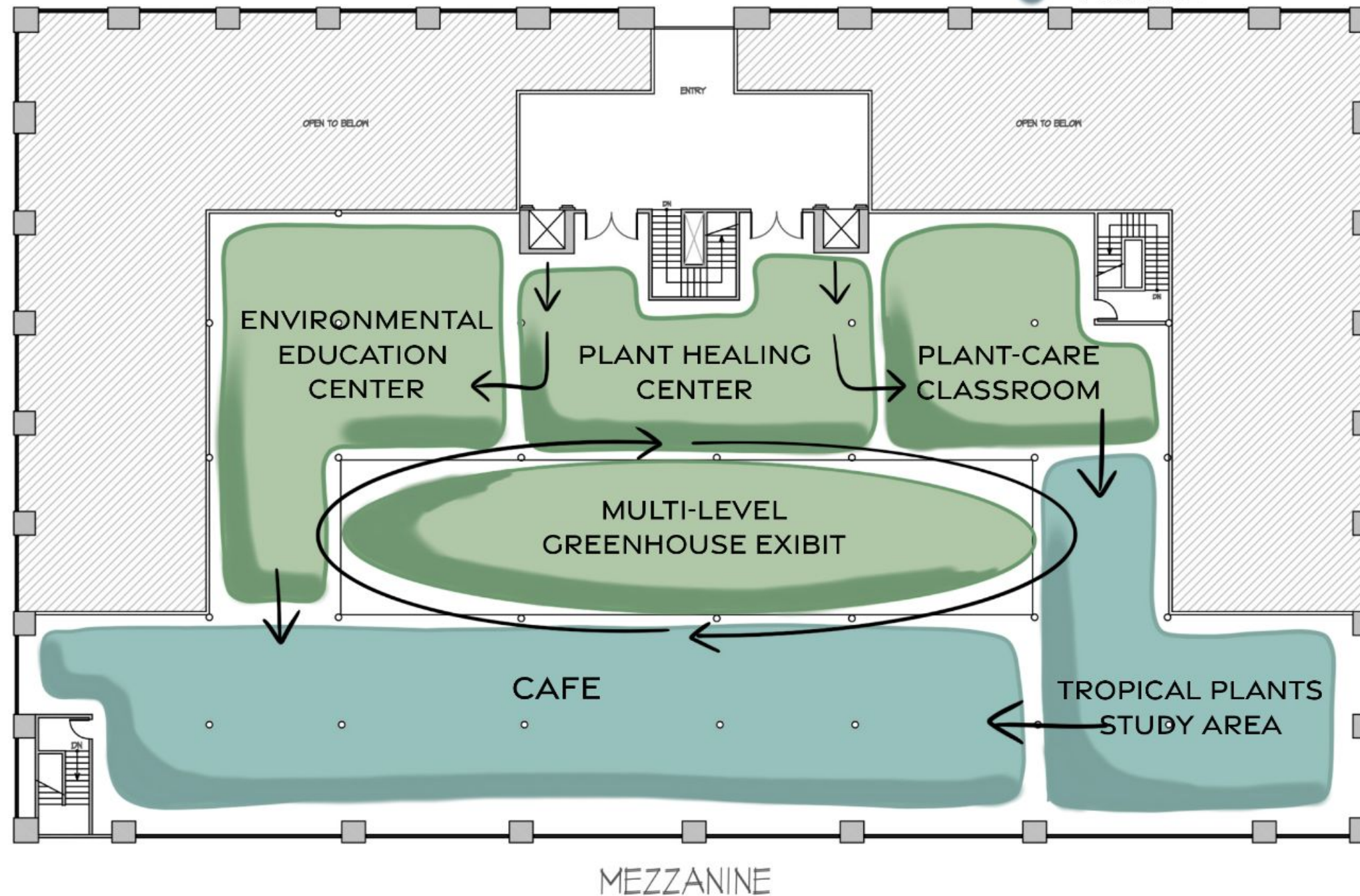
FIRST FLOOR



ADJACENCY DIAGRAMS

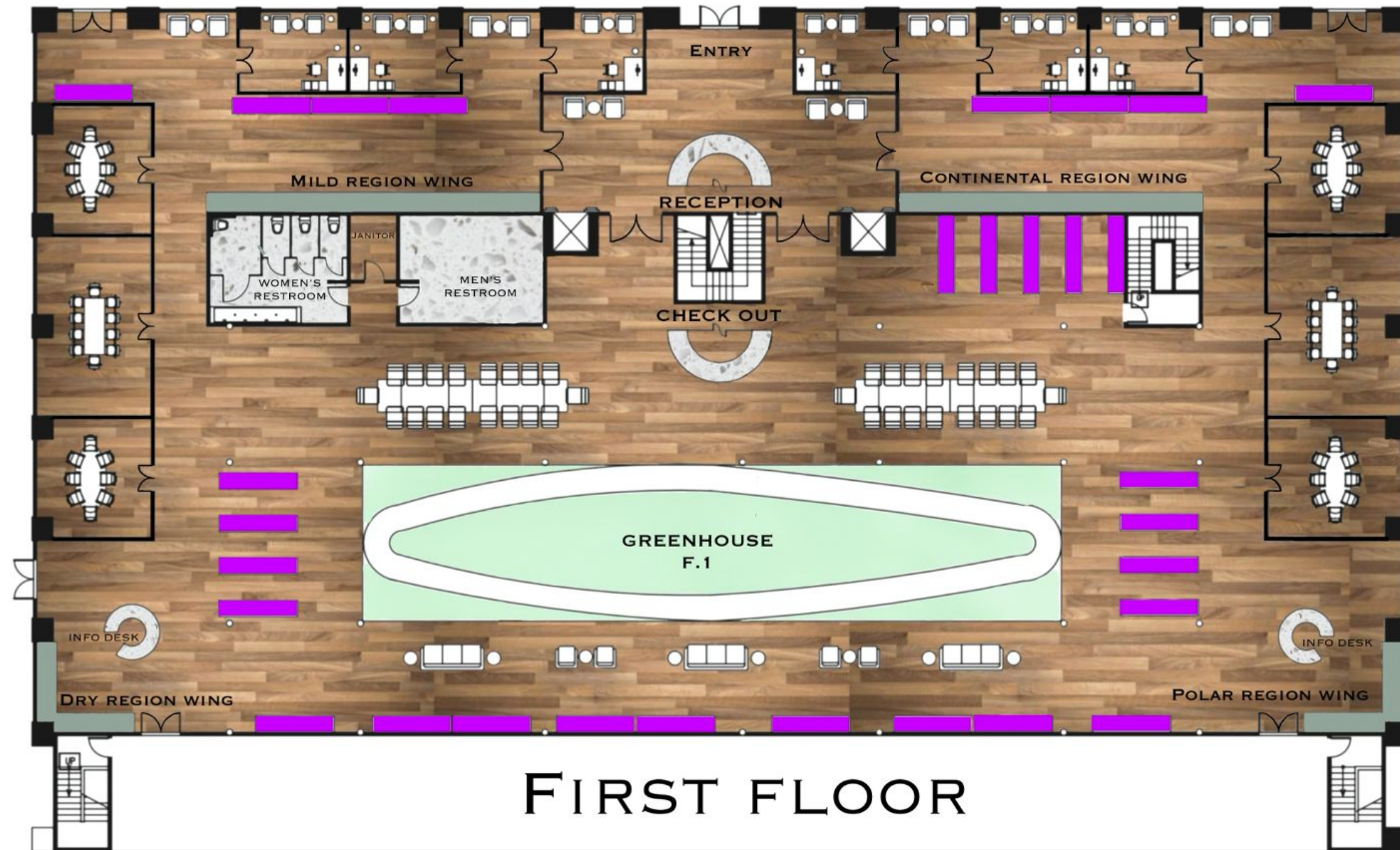
MEZZANINE

- PUBLIC
- SEMI-PRIVATE
- PRIVATE



FLOOR PLAN

FIRST FLOOR

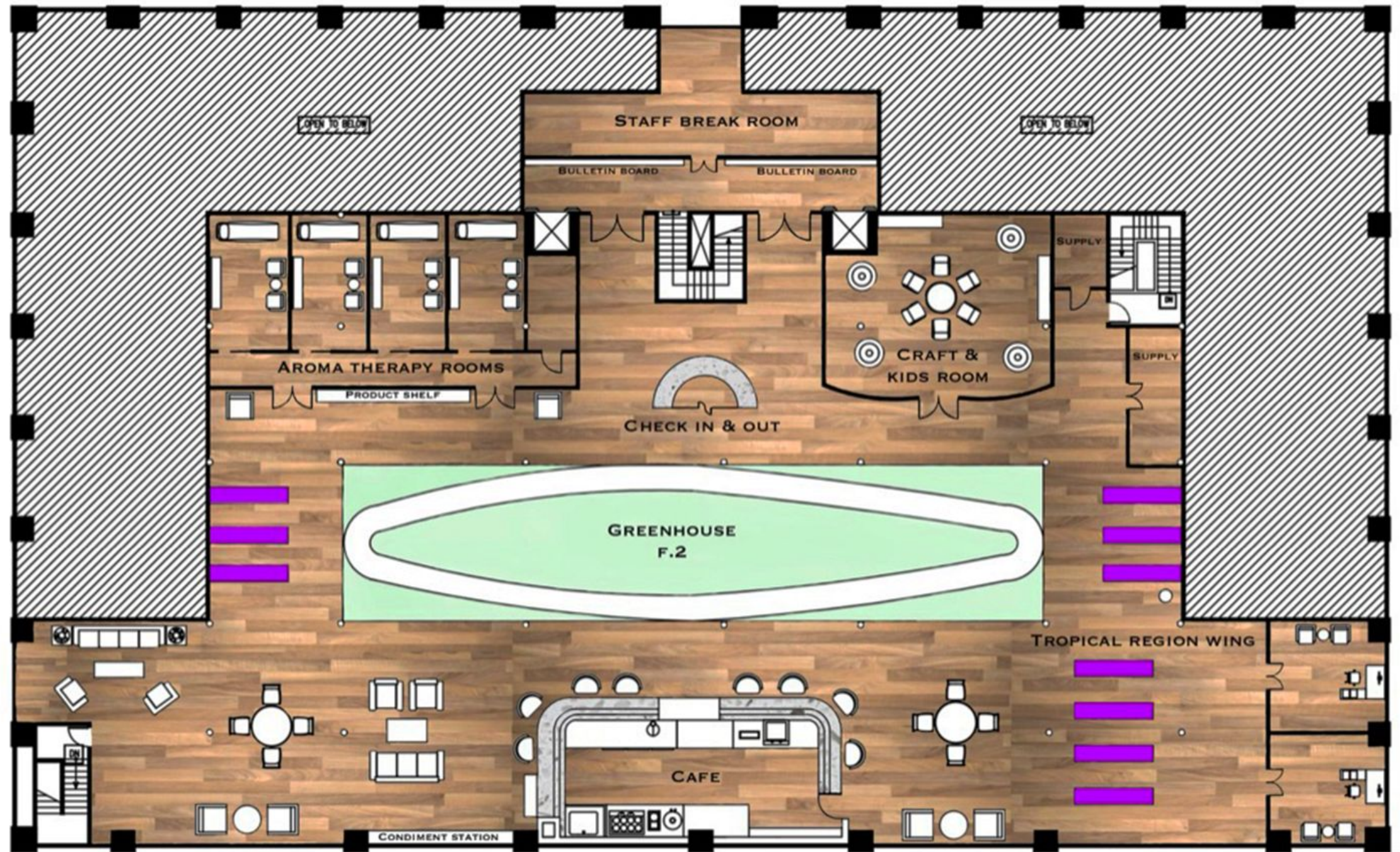


- BOOKSHELVES
- PLANT DISPLAYS



FLOOR PLAN

MEZZANINE



MEZZANINE

BOOKSHELVES



INTERIOR MATERIALS



FLOORING



COUNTERTOPS



STONE



DOORS



SINKS



DESKS



DESK CHAIRS



BOOKSHELVES



ACCENT CHAIRS



LIGHTING

VENDORS

FLOORING: CALI BAMBOO

COUNTERTOPS: GLASS RECYCLED

DOORS: URBAN DOORS

DESKS, TABLES & CHAIRS: FULLY

UPHOLSTERY FABRIC: REVOLUTION
FABRICS

SOFAS: ELEANOR RIGBY

OCCASIONAL CHAIRS: FOUR HANDS

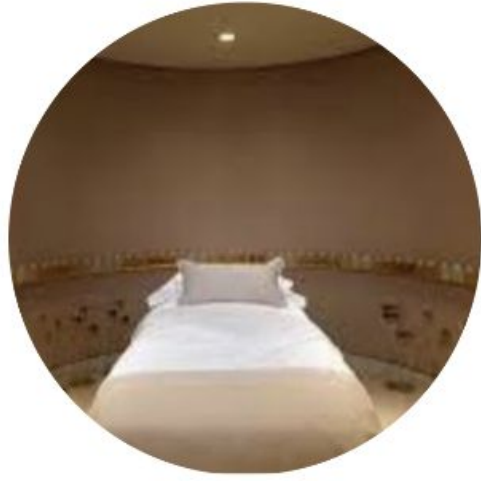
BOOKSHELVES: FOUR HANDS

LIGHTING: HUDSON VALLEY/TROY
LIGHTING

SINKS/HARDWARE: THE SPLASH LAB,
MARMISTONE



PROXEMICS



SOCIOFUGAL

- AROMA THERAPY STUDIOS
- PRIVATE STUDY ROOMS
- INDIVIDUAL SEATING IN CAFE

SOCIOPETAL

- CONFERENCE ROOMS
- COMMUNAL DESKS
- CAFE COUNTER SEATING

ERGONOMICS

- SIT/STAND DESKS
- ADAPTIVE TECHNOLOGY
- TILTED COMPUTER SCREENS
- WARM LIGHTING THROUGHOUT

ACCESSIBILITY



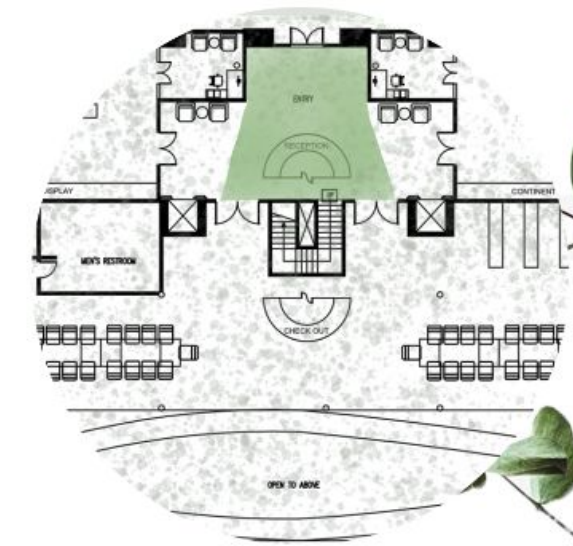
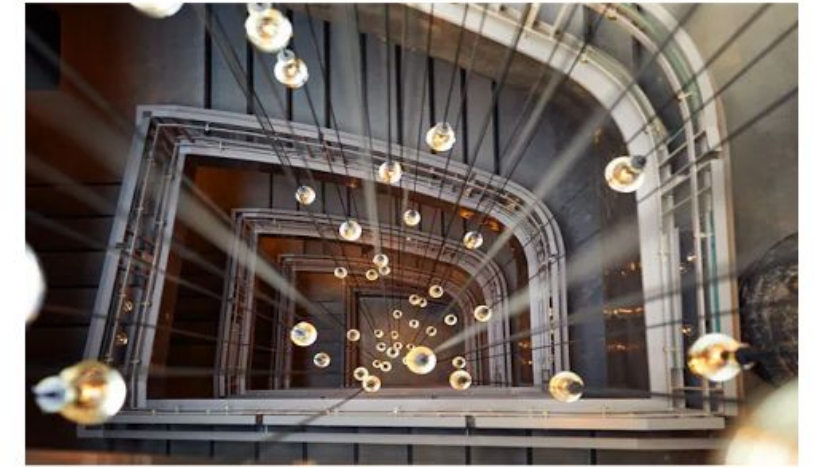
UNIVERSAL SPIRAL RAMP



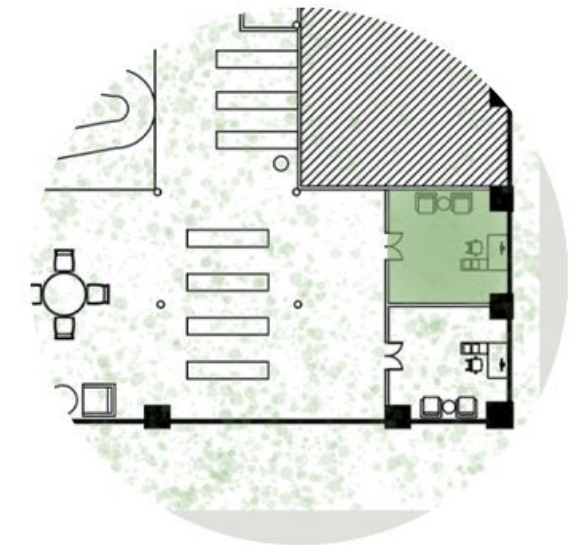
Features like foot activated buttons on all double doors, a universal ramp in the multi story greenhouse and tactile signage and walkways throughout the building allow for people with physical disabilities to enjoy the library at its full capacity. Library cards will also have a braille surface in order to be distinguished by the visually impaired. Headphones are available upon request for audio versions of all books in the library for people with hearing deficits.

In addition to keeping the library physically accessible, we also work to dismantle economic boundaries. Both public and private study areas will be equipped with computers - all with headphone jacks and charging ports to give everyone access to internet resources.

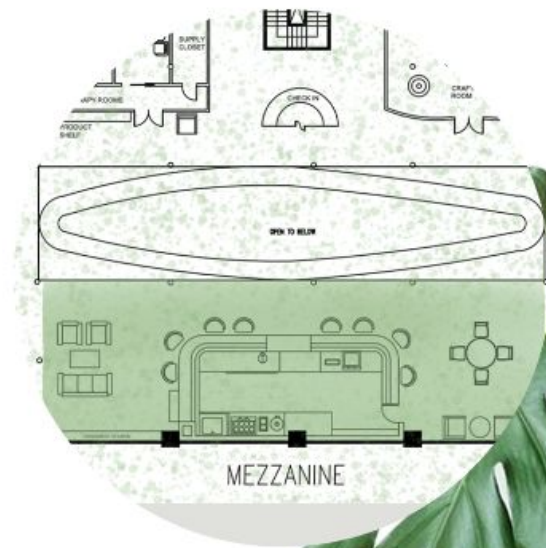
RECEPTION



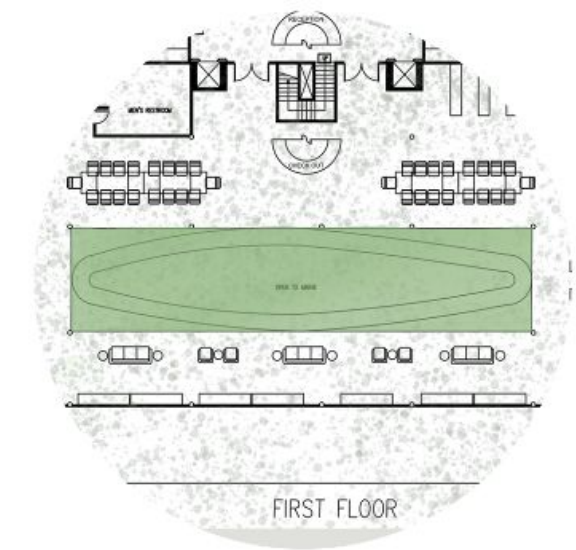
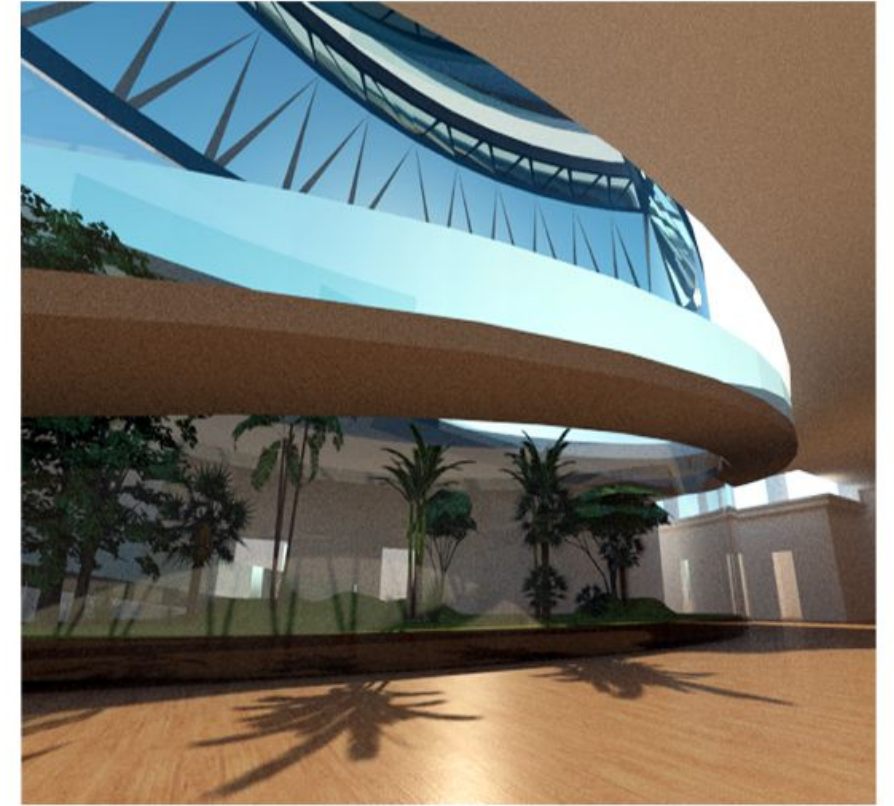
STUDY AREA



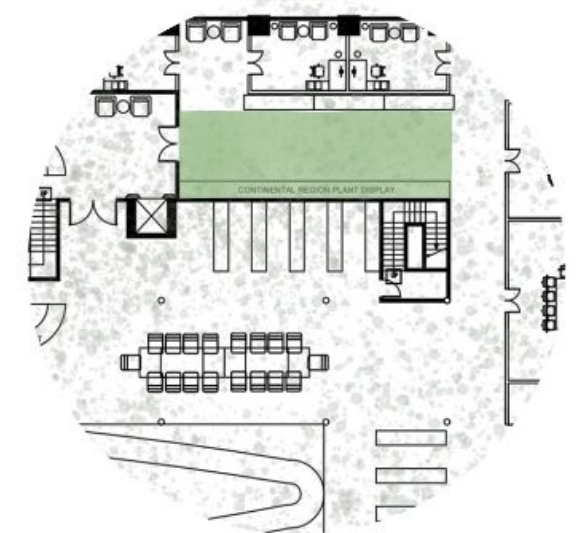
CAFE



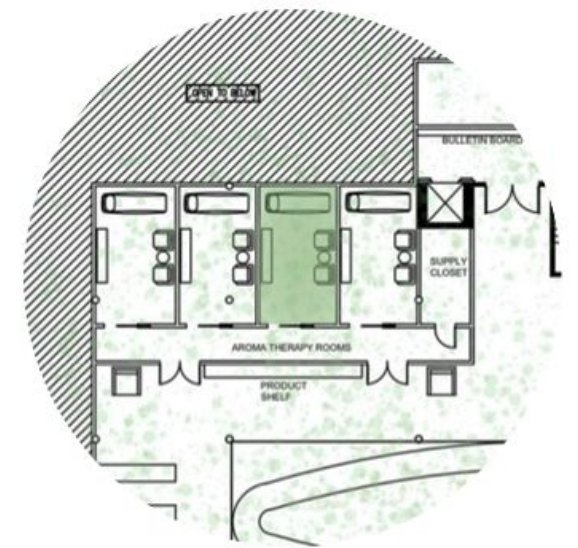
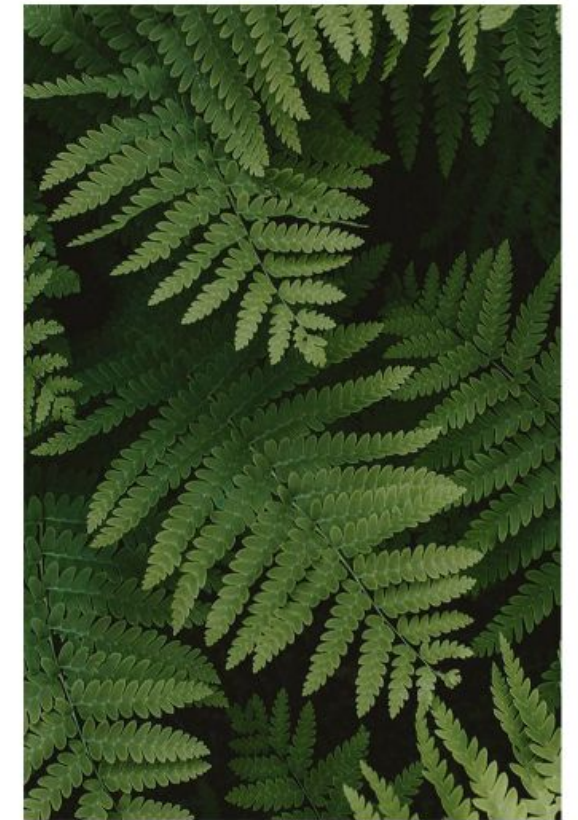
SPIRAL RAMP GREENHOUSE



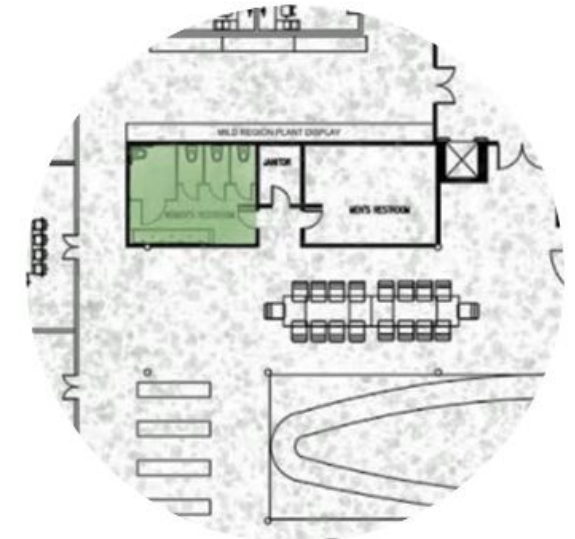
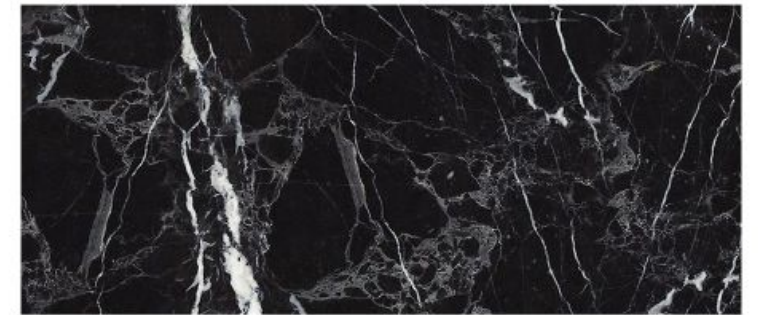
DISPLAY CASE



THERAPY ROOMS



RESTROOM



GREEN CARPET GALA

GALA DONORS:

The Ralph M. Parsons Foundation - Donations: \$500,000

The foundation's work in human services reflects the foundation's commitment to improving the lives of Los Angeles' most vulnerable community members, including low-income children, families, foster youth, seniors, the working poor, and homeless populations. The foundation funds a broad range of services and programs, including child welfare, youth development, supportive services, and basic needs.

W. M. Keck Foundation - Donation: \$220,000

The program supports organizations located in, and providing direct services to, communities in Southern California in the areas of arts and culture, civic and community services, health care, and precollegiate education.

The Otis Booth Foundation - Donation: \$280,000

Giving primarily for education, as well as for the arts, hospitals and health organizations, and for children and youth services.

